

LAND/DOCKS FOR SALE \$7,500,000

Port Isabel, TX Marina Possibilities



Site Specifications

- **Address:** Port RD, Port Isabel, TX
- **Acres:** 25
- **Price/Acre:** \$300,000
- **Access:** Port RD
- **School District:** Point Isabel ISD
- **Water District:** Laguna Madre Water District
- **Topography:** Flat Dirt/Brush, Deep Water Port & Docks
- **Suitable Use:** Marine Industrial/Commercial/Resort
- **Directions:** From HWY 100 in Port Isabel, East on Port RD to Deep Water Port and Land on Left.

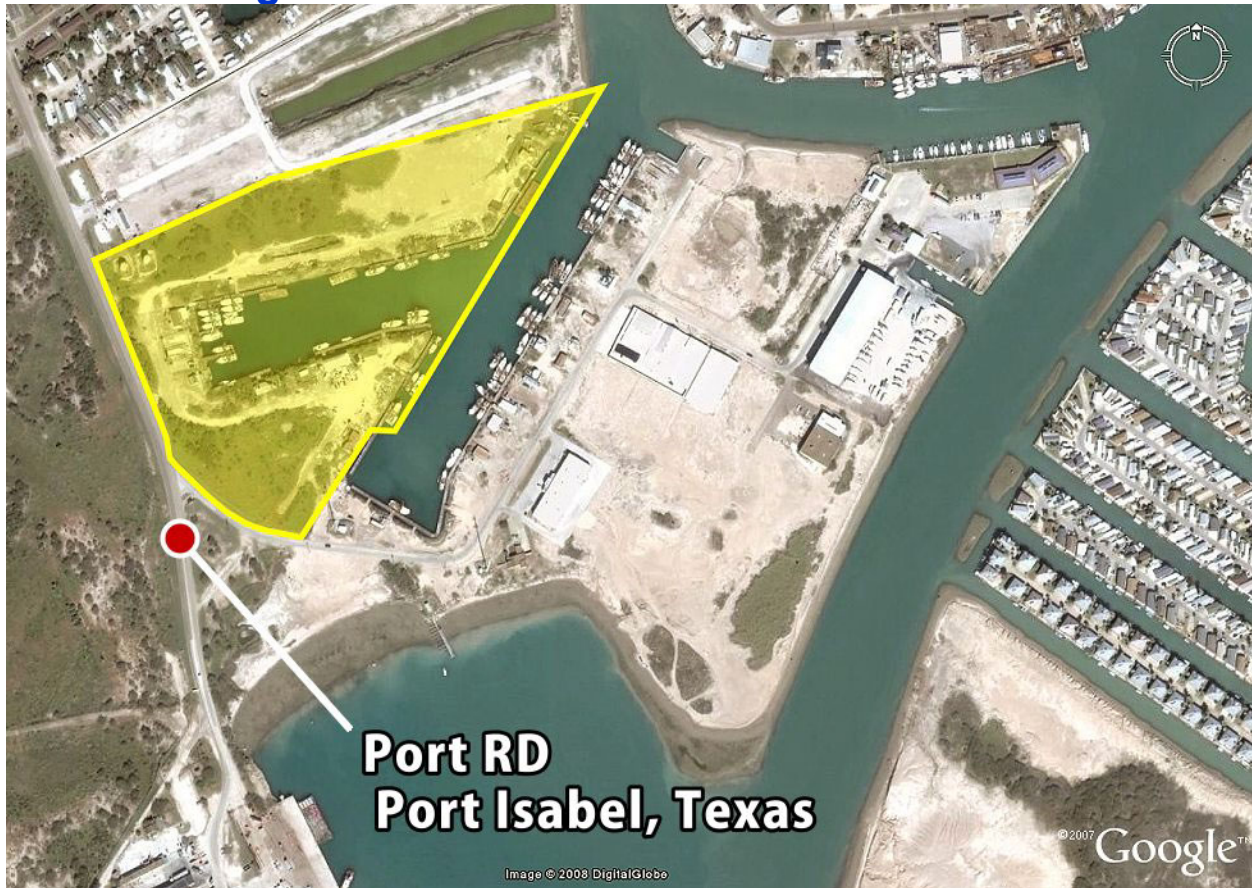
Description

25 acres of prime waterfront land in Port Isabel, TX, 19 of which are developable. 3,000 feet of waterfront dock access. 14' to 16' deep water port, safe harbor. Room for 250 50' boat slips, high density development possible with room for 500+ units.

Financing

- Cash/Conventional

Satellite Images



Realty Executives of South Padre Island • 410 Padre Blvd., Suite 105
South Padre Island, TX 78597 • Phone: 956.761.1500 • Fax: 956.761.1507

Possible/Proposed Use of Land



Contact

Roman C. Esparza, Owner/Broker GRI, ABR

Email: Invest@SouthPadreProperty.com

Cell: 956-433-9600

Realty Executives of South Padre Island • 410 Padre Blvd., Suite 105
South Padre Island, TX 78597 • Phone: 956.761.1500 • Fax: 956.761.1507