

GIANT LEAF NURSERY

FOR SALE \$950,000

24716 Bass Blvd. Harlingen, TX 78566



Type: Wholesale Nursery

Est. A/C sqft: 2932 sqft

Lot Size: 15 Acres

Location Description

15 acre wholesale plant nursery with 250,000 sqft of shade and greenhouses, growing grounds, irrigation system, maintenance and tool barn, four offices, three mobile homes, vehicles and trailers. Approximately one mile north of Hwy 83 on Bass Blvd. in Harlingen, TX. Complete capital asset inventory and plant inventory available upon contract presentment and non-disclosure agreement execution.





Realty Executives of South Padre Island • 410 Padre Blvd., Suite 105
South Padre Island, TX 78597 • Phone: 956.761.1500 • Fax: 956.761.1507

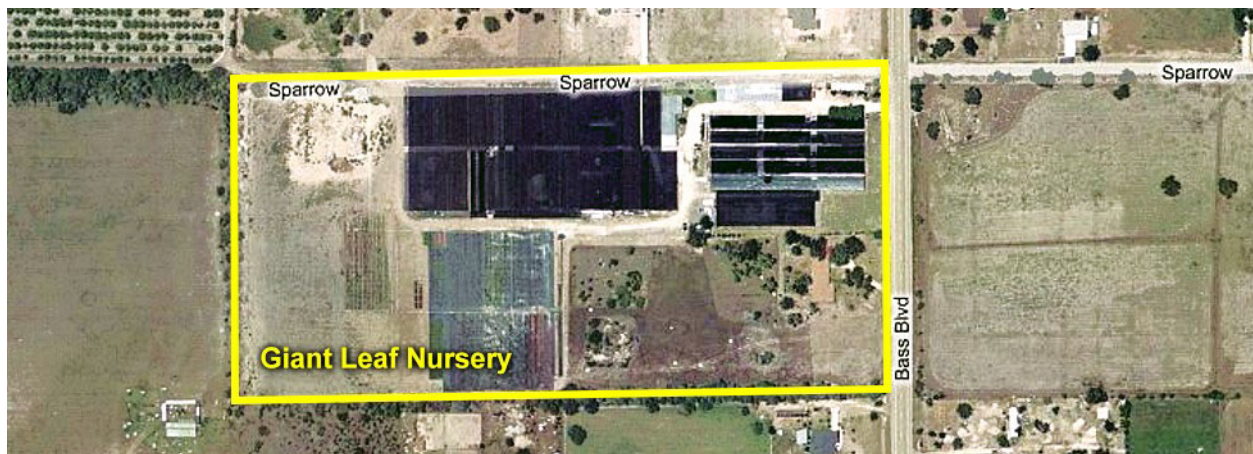
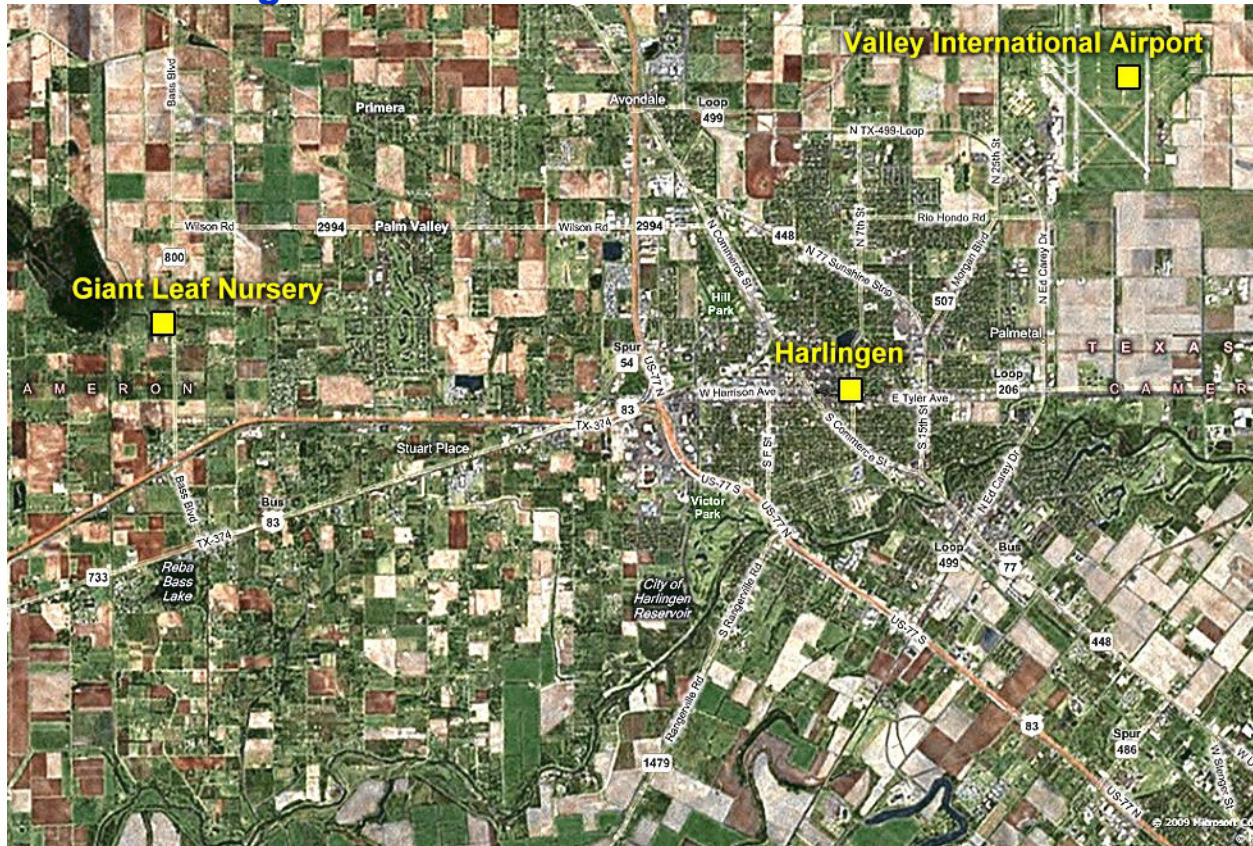


Realty Executives of South Padre Island • 410 Padre Blvd., Suite 105
South Padre Island, TX 78597 • Phone: 956.761.1500 • Fax: 956.761.1507



Realty Executives of South Padre Island • 410 Padre Blvd., Suite 105
South Padre Island, TX 78597 • Phone: 956.761.1500 • Fax: 956.761.1507

Satellite Image of Location



Contact

Roman C. Esparza, Owner/Broker GRI, ABR

Email: Invest@SouthPadreProperty.com

Cell: 956-433-9600

Realty Executives of South Padre Island • 410 Padre Blvd., Suite 105
South Padre Island, TX 78597 • Phone: 956.761.1500 • Fax: 956.761.1507