

# RAW LAND FOR SALE \$3,644,400

## Residential Subdivision Goldmine



### Site Specifications

- **Address:** FM 732 & 1577, San Benito, TX
- **Acres:** 242.96
- **Price/Acre:** \$15,000
- **Access:** FM 732, FM 1577
- **School District:** San Benito CISD
- **Water District:** Military Water Supply
- **Topography:** Ag/Brush, Partially Wooded, Resaca
- **Suitable Use:** Residential Subdivision Development
- **Directions:** North on 77 to FM 732 go South to Resaca Santa Subdivision.

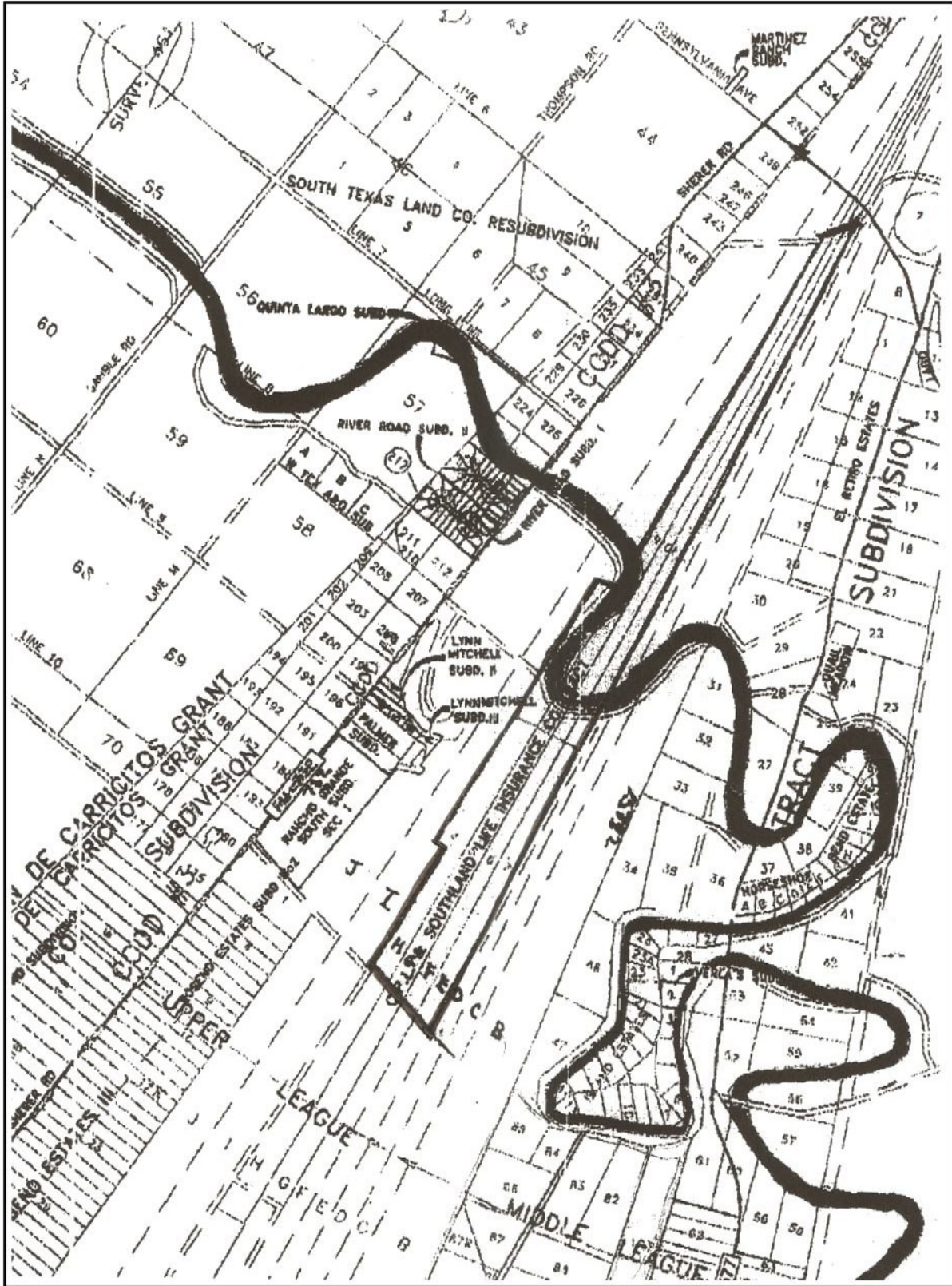
### Description

North on 77 to FM 732 go South to Resaca Santa Subdivision. Long and beautiful resaca flows right through the property. Perfect for subdividing into large country estates.

### Financing

- Cash/Conventional

# Survey



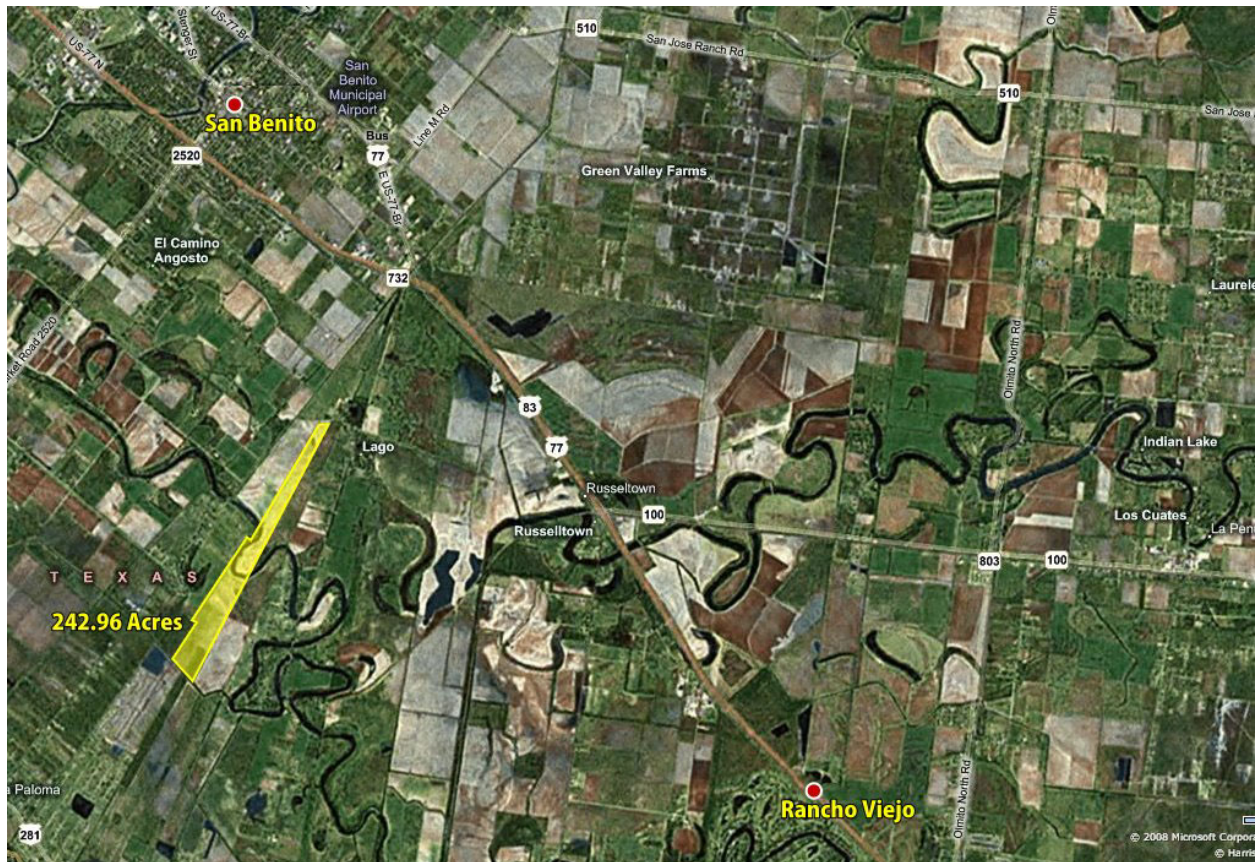
Realty Executives of South Padre Island • 410 Padre Blvd., Suite 105  
South Padre Island, TX 78597 • Phone: 956.761.1500 • Fax: 956.761.1507

# Satellite Image



Realty Executives of South Padre Island • 410 Padre Blvd., Suite 105  
South Padre Island, TX 78597 • Phone: 956.761.1500 • Fax: 956.761.1507

## Area Satellite Image



## Contact

**Roman C. Esparza, Owner/Broker GRI, ABR**

Email: [Invest@SouthPadreProperty.com](mailto:Invest@SouthPadreProperty.com)

Cell: 956-433-9600

Realty Executives of South Padre Island • 410 Padre Blvd., Suite 105  
South Padre Island, TX 78597 • Phone: 956.761.1500 • Fax: 956.761.1507