

# RAW LAND FOR SALE \$1,557,300

## Residential Subdivision Goldmine



### Site Specifications

- **Address:** FM 1732 & Carmen RD, Olmito, TX
- **Acres:** 87 +/-
- **Price/Acre:** \$17,900
- **Access:** FM 1732, Carmen RD
- **School District:** Brownsville CISD
- **Water District:** Military Water Supply
- **Topography:** Flat dirt brush for residential subdivision
- **Suitable Use:** Residential Subdivision Development
- **Directions:** FM 1732 W from Olmito to Carmen RD.  
Property is on southwest corner of FM 1732 & Carmen RD.

### Description

Perfect tract of land in Olmito suitable for commercial retail development or residential subdivision. Bordered on the north by FM 1732 and the expanding Rancho Viejo Subdivision. Bordered on the south by the World Birding Center, Resaca de la Palma State Park. This 87 acres may be sold separately as a 50 acre tract & 37 acre tract.

### Financing

- Cash/Conventional

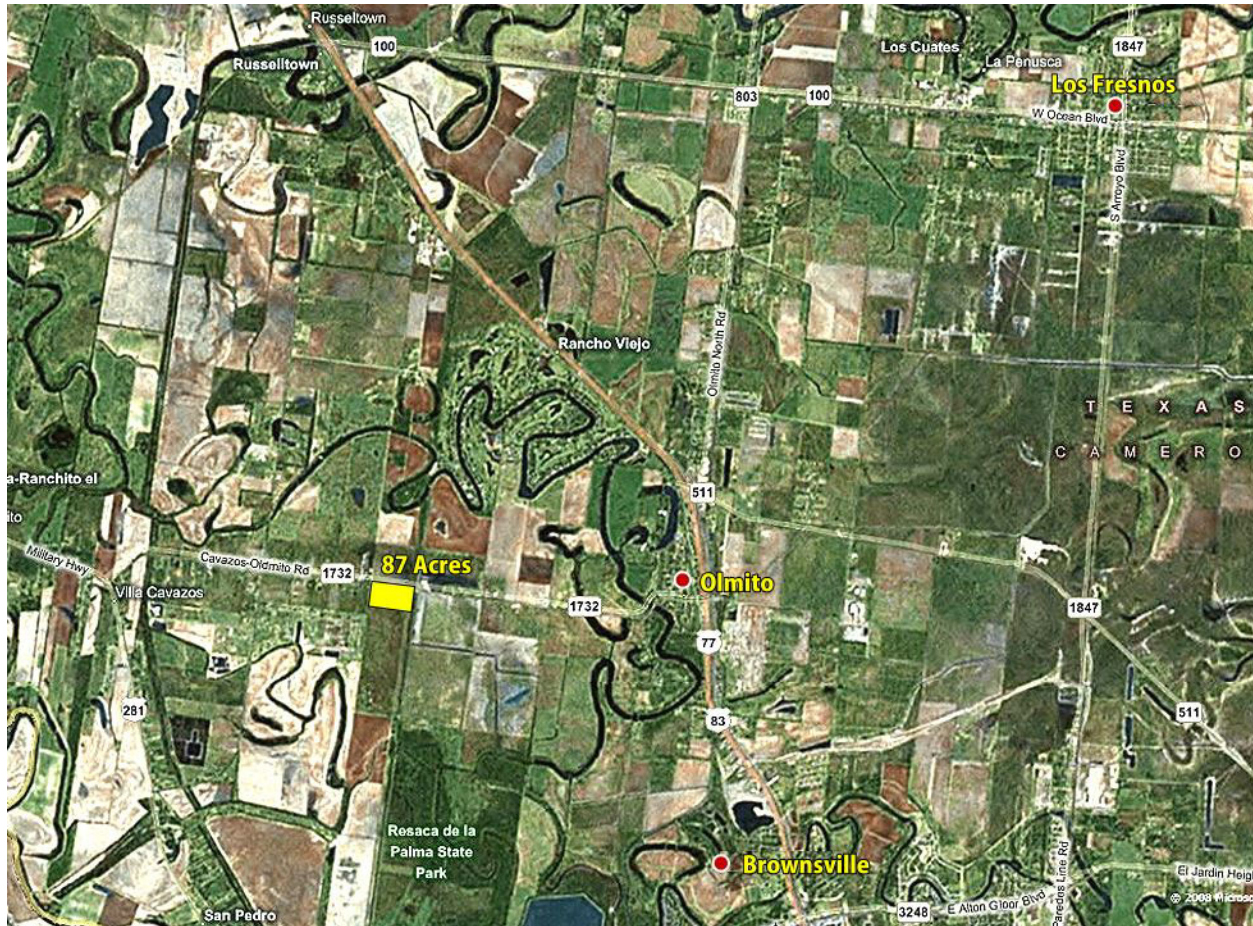


# Satellite Image



Realty Executives of South Padre Island • 410 Padre Blvd., Suite 105  
South Padre Island, TX 78597 • Phone: 956.761.1500 • Fax: 956.761.1507

## Area Satellite Image



## Contact

**Roman C. Esparza, Owner/Broker GRI, ABR**  
Email: [Invest@SouthPadreProperty.com](mailto:Invest@SouthPadreProperty.com)  
Cell: 956-433-9600

Realty Executives of South Padre Island • 410 Padre Blvd., Suite 105  
South Padre Island, TX 78597 • Phone: 956.761.1500 • Fax: 956.761.1507